

# TROWSE WITH NEWTON PARISH COUNCIL

## Minutes of the Parish Council meeting, held on 18<sup>th</sup> March 2024 in The Manor Rooms, Trowse at 7.15pm.

### PRESENT

Cllr Bowers, Cllr Price, Cllr King, Cllr P. Greenizan, Cllr Haynes, Cllr A. Greenizan, Cllr Long and Kate Leggett (Clerk)

### 086 (001) APOLOGIES

Cllr Barnes and Owen.

### 087 (002) DECLARATIONS OF INTEREST AND DISPENSATIONS

Cllrs on the Manor Rooms Management Committee, those with allotments, those on the Trowse Historical Society committee and those who are Trowse Primary Governors.

### 088 (003) MINUTES OF THE PREVIOUS MEEETING

Minutes of the meeting held on the 19<sup>th</sup> February 2024 were **Agreed and Signed with amendments to the recorded date.**

### 089 (004) PUBLIC FORUM

a)

**District reports** – at the end of these minutes - report added to website.

**County report** – at the end of these minutes – report added to website.

b) **Public**

A resident spoke about the usage of the Beryl Bikes and that their availability in the village has been a success. He also raised concerns about the safety of cyclists and pedestrians at the King Street/Bracondale junction. It is thought that this junction was very tricky to cross if not in a vehicle. The resident asked if improve cycleways could be considered for this location. Clerk stated that she would make investigations with Norwich City Council about who to approach with this matter. Cllr Neal pointed out that this junction could fall into the East Norwich Regeneration Area and may benefit from conditions placed on planning applications for this proposed development.

Following the success of the village sign refurbishment, Chris Bowers and Peter Schindler would like to undertake the renovation of the phone box. **Cllr Long proposed a budget of £100, this was seconded by Cllr Haynes. This to be a formal agenda item for approval in April.**

Chirs and Peter would also like ton undertake the repair of the Village boundary cross at some pint in the future.

Cllr Long raised the issue of the homeless person currently living in the bus shelter. **This is to be placed on the agenda for the next Open Spaces meeting for further discussion. In the meantime the Clerk will raise it again with South Norfolk's Homelessness Officer.**

### 090 (005) MATTERS ARISING FROM PREVIOUS MINUTES (UPDATE FROM THE CLERK)

<b>Decisions/Actions</b>	<b>Delegated to</b>
Appointment of Internal Auditor	Clerk - actioned.

### (006) CLERKS REPORT

Sign

Date

The Clerk informed members of the new initiative from South Norfolk DC about the introduction of Play streets. Clerk to send this link to Cllr Long and to place in the April/May edition of the newsletter.

## **091 (006) COMMITTEE UPDATES**

### **6.1 Personnel and Communications**

In the absence of Cllr Barnes, Cllr Bowers gave an update.

- Cllr Bowers will contact newsletter delivery volunteers in the next few days to inform them of imminent delivery.

- The Clerk will be on leave as of the 22<sup>nd</sup> March. An out of office reply will be set for emails.

### **6.2 Finance**

Cllr Haynes took those present through the most recent Finance Committee meeting.

- The internal auditor has confirmed for the 23/24 audit.
- New saving accounts are being investigated. The Clerk will provide more information for the next meeting when a resolution can be made.
- Discussions are taking place with the Manor Rooms Management Committee regarding the letting of the PC Office space. Cllr Haynes advised members that the Clerk will be making some investigations into utilities usage for the office. Cllr Haynes also stated that the PC would happily accept the new Community Rate for the hire of the meeting room.

### **6.3 Open Spaces**

In the absence of Cllr Owen, Cllr Bowers and the Clerk gave a rundown of discussions held at the most recent Open Spaces meeting.

- The most recent allotment inspections had taken place and the appropriate notices sent.
- Discussions about the hedge and fencing on the Dell being reopened took place. It was decided that the hedge would remain in place.
- A discussion had taken place about the memorials that had failed the safety inspection. The Clerk had been successful in contacting some family members and plans were being put in place to make the necessary repairs. Other memorials who have not got any owners will have to be repaired by the PC.
- The newly formed working group for the Biodiversity Action Plan has identified the first project they wish to organise, which is the Cemetery on Whitlingham Lane. There will be some planting of shrubs and wildflowers after some of the more intrusive green alkanet has been removed. The first session at the cemetery will be on the 24<sup>th</sup> Feb.

- a) Update from the events working group. To discuss and approve the Closure of White Horse Lane for the Sport Day event in July. The road closure is to ensure the safety of participants and members of the public for the duration of the event. **Proposed by Cllr Haynes, seconded by Cllr Long. All in favour.**
- b) Update from Biodiversity Working Group. Christine Ender gave a brief update on the plans of the working group. These include the planting of the new hedge on the Cemetery and further works around the village. We are currently looking to engage the school to see if they would like to participate in some activities.
- c) Discussion around use of the MUGA. The Clerk advised that as we already have a meeting planned with Crown Point Estates (CPE) representatives on the 15<sup>th</sup> April, that this item could be discussed with them then. **Clerk to inform CPE of this.**

## **092 (007) MANOR ROOMS**

The chair of the Manor Rooms gave an update.

- The Manor Rooms Management Committee are pleased that the Parish Council are happy to accept the new Community hire rates for the meeting room and that discussions can take place about the provision of the office space.
- The MRMC will be undertaking an energy efficiency survey to try and ascertain the best way forward with regards to heating. The current heaters are no longer in production so spare parts cannot be sought.

**093 (008) FINANCIAL MATTERS**

- 9.1- To agree Payments for February 2024 as circulated. **AGREED AND APPROVED.**
- 9.2 – To agree bank Reconciliations for February 2024 as circulated. **AGREED AND APPROVED.**

**094 (009) PLANNING**

None for this meeting.

**095 (011) POLICIES**

None for this meeting.

**096 (012) DATE AND TIME OF NEXT MEETING**

Next meeting is **Monday 22<sup>nd</sup> April 2024** at 7.15pm.

**Meeting closed at 8.20pm.**

<b>Decisions/Actions</b>	<b>Delegated to</b>
Agenda item for Phone box repair budget	Clerk
Homelessness Officer contact	Clerk
Crown Point estates meeting re MUGA	Clerk

---

**District and County Reports**

## Benefits of adoption



### Greater Norwich Local Plan

#### **GNLP:**

We received the Inspectors report on the submitted Local Plan. There were a few minor modifications to the grammar in the Plan but otherwise they were happy with it.

It will now go to the three Councils Cabinet and Council meetings to be agreed followed by a six week legal challenge period.

#### **District Direct:**



South Norfolk and Broadland Councils have a service in the NNUH working hard to ensure that discharges take place as soon as they can. They work with anybody who lives in the catchment area of the NNUH.

There are many social reasons why someone may need to remain in hospital after they are medically fit to go home.

Because the District Direct team can purchase goods and services immediately they can work quickly to remove impediments to discharge.

The hospital believe that referring a case to District Direct saves, on average, 8 bed days.

In the last financial year District Direct received 1400 referrals saving an estimated 11,200 bed days. This has been key in ensuring bed availability at the hospital. Also financially a bed costs roughly £1000 a night so this is also saving a lot of money.

We have now expanded this service so we are working in the A&E department, with the Ambulance Service and Paramedics and also at Hellesdon and Julian Hospitals.

## South Norfolk Litter Pick:



We are operating our usual litter picks now and are looking for schools, parish councils and community groups to get involved and organise their own litter pick. All resources and equipment will be provided by us so you can get started immediately with a chance of also winning £200.

More details on our website.

## Strategic/Delivery plan:



Strategic and Delivery Plan\_Mar 20:

The Strategy and Delivery Plan outlining plans, priorities, and themes. Town and Parishes, along with private and other public sector bodies are considered key partners over the next 4 years. Each Council has their own strategic plan, some elements are the same and all are supported by the One Team. If anyone wants to have a conversation around their own plans to please get in touch – [corinne.lawrie@southnorfolkandbroadland.gov.uk](mailto:corinne.lawrie@southnorfolkandbroadland.gov.uk)

## Community Engagement Van (CEVAN):

Our Help Hub is a really important service that we offer our residents. Looking at reports we received recently it showed that our Help Hub supports 100 individuals each week.

The Help Hub team have a brand-new outreach vehicle, specifically built to take into our communities to deliver support services across South Norfolk and Broadland.

The van is entirely mobile and converts into an open space where a range of support services can be delivered – as well as presentations, activities, and small meetings.

The vehicle will soon begin a targeted outreach campaign across our districts, to offer support to towns and parishes which we have identified as being in need.



We would be keen to hear from you if you feel that your parish is in need of a particular support service.

If you have any questions about the Van, please get in touch with the Communities team.

## Business Awards:

Sign

Date



I attended the Business Awards at the beginning of March at Norwich City Football Club.

This was another fantastic event celebrating our businesses in South Norfolk and Broadland with over 300 attendees.

## Play Streets:

What are play streets?

Play streets (or 'playing out' sessions) are neighbour-led, short, road closures, creating a safe space for children to play freely together on their doorstep. Any street is eligible provided it is not on an active bus route.

Play streets typically allow children to play freely, without organised or activities. In practice, this means children cycle, scoot, skate, chalk, hopscotch, kick a ball around and make up games.



games  
skip,

This model was first developed by parents on one street in Bristol in 2009 and has now been taken up by hundreds of street communities all over the UK.

The key features of this model are:

- Resident-led and organised
- Short, regular road closures
- Free, child-led play
- All neighbours consulted and included
- Road legally and safely closed to through traffic
- Stewarded by residents
- Car access at walking pace
- Simple, 'normal' – not a street party!

To support communities in taking part in the Play Streets initiative we are offering a Play streets Grant to help with additional costs.

The grant offers up to £75 to communities who wish to take part in the Play Streets initiative. This may be used to fund:

- Low-cost items such as games and sports equipment for children and families to use during the play streets session.
- Any promotional activities to get the event up and running.

For further information and to apply for this grant please visit our website.

## Lord Fuller OBE:

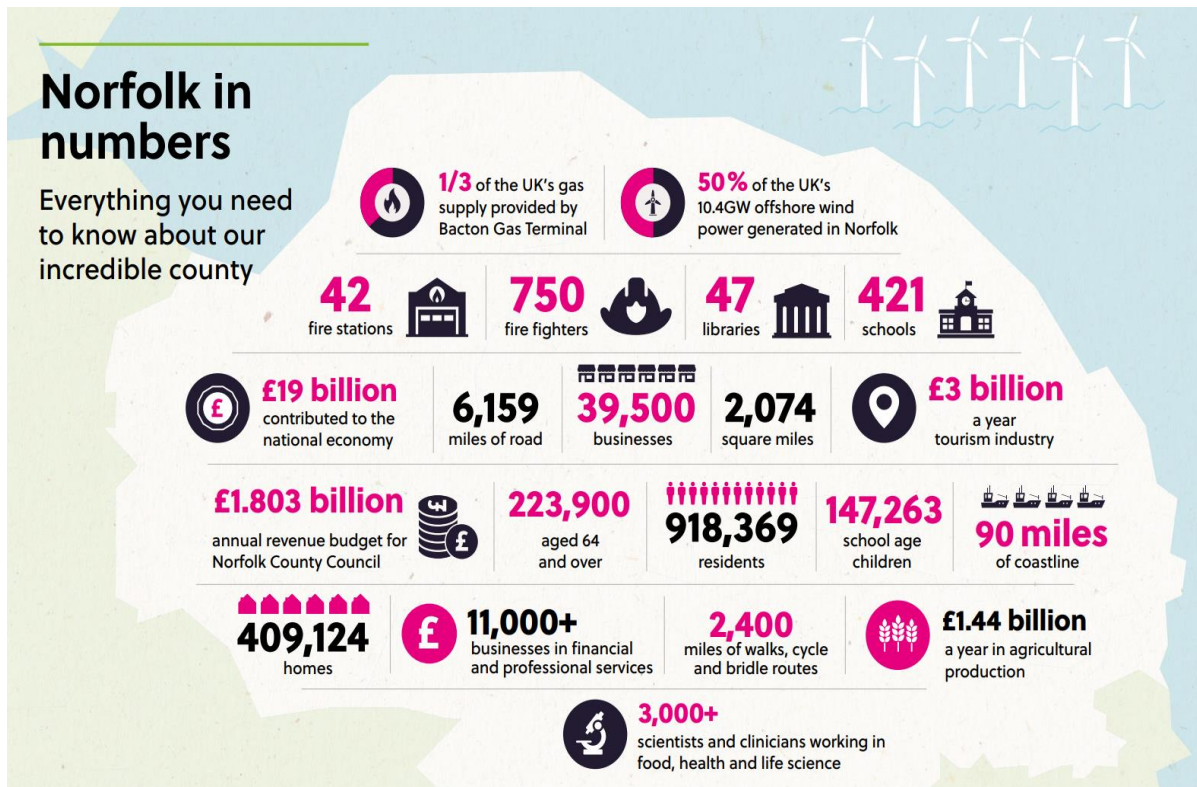
South Norfolk Council's Leader, John Fuller, has just become a Lord.

He will be stepping down as Leader at the Council's AGM this year.

Sign

Date

## County



### PCC election 2<sup>nd</sup> May

Do you have ID as required

Now first past the post

County elections May 25

### Cabinet to vote on £457m plan for Norfolk's Highways and Transport

Investment of £457 million in Norfolk's Highways and Transport over the next three years is set to be considered by the county council's cabinet.

The proposals, which are due to be discussed at Norfolk County Council's Cabinet at its meeting on Monday 4 March, cover investment in highways maintenance, cycling and walking schemes, traffic management and public transport infrastructure across Norfolk between now and 2027.

"More than that, this programme can give our residents confidence that the plans we're working on to improve transport in Norfolk - whether new roads such as the Long Stratton bypass or expanding and improving the bus services available across the county - are being backed by the funds they need to succeed. Whether you walk, cycle, drive or take public transport, this programme will make your experience of moving about Norfolk easier and smoother in the years to come."

Further allocations from the £10m investment in highway maintenance by Norfolk County Council are proposed, alongside £4.51m from the Network North Road Resurfacing Fund 2024/25. These works include resurfacing roads and footways, bridge maintenance and regular activities such as surface dressing.

The investment, set out over the financial year 2024/25, 2025/26 and 2026/27, includes funding from Norfolk County Council, the Department for Transport, developer contributions such as Section 106 and CIL funds and other sources of funding. The element to be paid by Norfolk County Council in 2024/25 was approved earlier this week as part of Norfolk County Council's budget, which councillors voted on at the Full Council meeting on Tuesday 20 February.

The Capital Programme also covers work on major schemes, including the Long Stratton Bypass, Norwich Western Link and West Winch Housing Access Road.

Sign

Date

he three year plan follows the Government's 2023 autumn statement, which proposed funding allocations for 2024/25 through to 2026/27. The plan also includes funding from a number of other streams, including the Transforming Cities Fund and the Bus Service Improvement Funds from which Norfolk County Council has successfully secured funding.

£1m boost for 118 local highway schemes

£1m is set to be invested in 118 parish highway schemes in Norfolk, thanks to a county council initiative.

The council's parish partnership scheme invites communities to bid for cash for improvements such as vehicle activated signs, bus shelters, "trod" footpaths\* and village gateways, as well as joining a Safety Camera Partnership scheme. The latest partnership schemes, for 2024/25, are set to be approved by the council's cabinet.

This year, the county council is set to provide £467,884. With match funding from parish and town councils and a contribution of £43,760 from the Safety Camera Partnership. This could bring total investment up to £1,040,586 in 118 schemes across Norfolk.

The scheme was launched in September 2011. This year, the council received 118 bids and is proposing to support all of them, including 97 bids for small highway improvements and 21 bids for installation of SAM2 - a Speed Awareness Message mounted on a Vehicle Activated Sign, urging vehicles to reduce their speed when they travel in excess of the speed limit.

The most popular schemes that have been bid for are:

Village Gateways - 26 bids

"Trod" footpaths\* - 14 bids

Bus Shelters - 10 bids

[Landline telephone digital switchover - Norfolk County Council](#)

Landline telephone digital switchover Apprenticeships

The Apprenticeships Norfolk scheme has recently hit the £1m milestone of levy transfers a year ahead of schedule. Through the scheme, 90 businesses in the county have started 180 apprenticeships, from Level 2 through to Level 7, using unspent funds in Norfolk that would otherwise been returned to HM Treasury.

The apprenticeship levy is payable by organisations whose annual wage bill is more than £3m and equates to 0.5% of the bill. But if the business has undertaken all the apprenticeships that it has capacity to deliver, it can donate up to 25% of its annual apprenticeship levy to another organisation. Levy transfers are used for new apprentice starts, new recruits and existing employees.

Donating levy funding encourages corporate social responsibility and reduces wastage of any unspent apprenticeship levy - keeping funding in Norfolk and helping people to develop their careers or try something new.

Members can signpost any businesses wanting to find out more about the scheme to the [Apprenticeships Norfolk website](#). Businesses can enquire about receiving a levy transfer, or donating their unspent levy, by completing an expression of interest form or calling 0344 800 8024.

Director of Public Health Annual Report - Smoking and Vaping

The Director of Public Health for Norfolk has released his independent annual report.

The report details findings on the County's smoking and vaping habits along with the steps Norfolk County Council and partners are taking to achieve a smoke free generation by 2030.

Reducing rates of smoking, effective tobacco control and controlling long term vaping use and take up are some of the council's key public health priorities and as a result, were selected as the focus for this year's report.

Currently, around 13% of adults (99,300 people) in Norfolk smoke. Great Yarmouth has the highest adult smoking rate (around 18%, approximately 14,200 smokers) and Broadland has the lowest (around 8%, approximately 8,900 smokers). The report also shows that an estimated 44,900 children in Norfolk live in households with adults who smoke.

Smoking remains one of the biggest contributors to preventable ill health and health inequalities. It kills an estimated 1,240 people in Norfolk every year and accounts for nearly 6,000 years of life lost annually.

Sign

Date



The costs associated with smoking in Norfolk are estimated at £872 million annually, including health and social care costs, lost productivity, and house fires.

Case studies from Norfolk highlight ways the council is working together with partners and through our [Smokefree Norfolk](#) and [Ready to Change services](#) to help people quit.

The full report is available [here](#).

#### Food Savvy supporting Food Waste Action Week 18-24 March 2024

Norfolk County Council's Food Savvy team will be supporting national Food Waste Action Week, to raise awareness of food waste issues and give practical tips to help householders cut down on the amount they throw away.

Food Savvy, is a joint project between Norfolk County Council and the Suffolk Waste Partnership to help householders across Norfolk and Suffolk to make the most of their food, reduce food waste and save money. Norfolk are taking a joint approach with Suffolk to create a bigger impact to tackle food waste and to ensure that residents in both counties are receiving valuable support on this important issue.

More information can be found on their food savvy website [here](#).

#### Norfolk Museums - free entry during National Lottery open week

To say thank you for the £30 million raised for Good Causes every week by players, National Lottery funded venues are offering free entry, discounts and special offers throughout [National Lottery Open Week](#). This offer includes Norfolk Museums.

Just bring along a scratch card or lottery ticket for free admission to Norfolk Museums for up to six people on the dates below:

[Norwich Castle Museum and Art Gallery](#) - Sat 9 to Sun 17 March

[Strangers' Hall](#) - Weds 13 and Sun 17 March

[Lynn Museum](#) - Sat 9 and Sat 16 March

[Ancient House](#) - Tours on 12 March (booking essential) plus admission Fri 15 and Sat 16 March

[Museum of Norwich](#), [Time and Tide](#) and [Gressenhall Farm and Workhouse](#) - Sat 16 and Sun 17 March

#### Norfolk and Waveney Integrated Care Board - progress update

Health leaders have praised the hard work and commitment of staff as NHS Norfolk and Waveney Integrated Care Board progresses out of national support.

They also said that the progress reflects the strong partnerships being developed within the NHS and with many other partners including colleagues in local government; voluntary, community and social enterprise organisations; and residential and domiciliary social care.

NHS England recently confirmed that the NHS Norfolk and Waveney Integrated Care Board is no longer in NHS oversight framework segment 4 and has been removed from the Recovery Support Programme (RSP), formerly known as "special measures". (The RSP provides a collaborative, system-focused approach for supporting providers and systems with the toughest challenges).

Key improvements across the NHS in Norfolk and Waveney include:

Key quality improvements and progress at two of the system's providers. The Queen Elizabeth Hospital Kings Lynn NHS Trust exited special measures in April 2022 and last February the Norfolk and Suffolk NHS Foundation Trust moved from a CQC rating of Inadequate to Requires Improvement.

Sustained improvement in performance in urgent and emergency care services, to include the establishment of virtual wards at all three acute trusts.

Improvements in discharge planning and patient flow, helping to reduce the length of time people stay in hospital, decreasing their need to be readmitted and improving their overall experience.

Significant and sustained improvement in ambulance response times and handovers, enabling ambulances to quickly get back on the road so they can get to the next person who needs help.

Sign

Date

A system wide reduction in the longest waits for people who require a mental health bed, with further ongoing improvements planned.

Greater efficiencies and progress against financial plans through closer collaborative working with partners.

Further information available [here](#).

### Government updates

#### Household Support Fund extension

A six-month extension to the Household Support Fund, which helps the most vulnerable people struggling with the cost of living, was announced in the budget. Council leaders from across the political spectrum had previously written to the Chancellor, in a letter coordinated by the LGA, calling for a continuation of the fund.

#### The Community Ownership Fund: Round 4 - Expressions of Interest invited

The Community Ownership Fund will shortly be publishing an updated prospectus and guidance for Round 4, the final round of the fund. This fund helps community groups buy or renovate assets that would otherwise be lost to the community.

The government has provided a new Expression of Interest form. They ask that all prospective applicants, including those that have previously submitted a successful EOI form, submit a new EOI on the updated system if they have an interest in applying. Only applicants who submitted an EOI in the new system will be informed when a bidding window is about to open and will receive the link needed to apply to the fund.

The new EOI has been simplified to give applicants a result within minutes, so they will be able to see whether their project could be suitable for COF much quicker than before.

Further information and a link to the Expression of Interest form available [here](#).

#### Extension of Jubilee Village Hall funding

The government is providing additional funds for the Platinum Jubilee Village Halls Fund. The original £3m capital fund to improve and modernise village hall facilities ahead of the Platinum Jubilee was announced in 2022. An additional £5m has now been allocated.

#### Funding for Towns Scheme - Thetford and Kings Lynn added

The Chancellor revealed in the budget that 14 more towns across England would be added to the [Long-term Plan for Towns Scheme](#). These include Thetford and Kings Lynn. Great Yarmouth was included in the list in October 2023.

They will each be required to create a 10-year delivery plan, setting out their vision for investment and regeneration, which will be developed in consultation with local people, and could benefit from up to £20m in funding. Town boards made up of community leaders, employers, local councillors and MPs, will be responsible for overseeing and delivering this.

### Public Services Productivity

HM Treasury have published a document outlining their Public Services Productivity Plan: [Seizing the Opportunity: Delivering Efficiency for the Public - GOV.UK \(www.gov.uk\)](#).

This says that Improving public sector productivity will help the government to ensure the long-term sustainability of public finances and deliver the best services for the public.

The plan has 5 main areas of focus: procurement; reducing fraud, error and tax evasion; major projects; asset management; digital transformation.

The chancellor also confirmed an additional total of £165m for local authorities towards the creation of 200 more children's social care placements to "combat profiteering" and strengthen "preventative action to reduce demand on public services"; that the Treasury will match funding of up to £45m to build children's homes placements; and that £105m would go towards creating 15 new special free schools, with locations to be confirmed by May.

Sign

Date